

“THE MUMMY”

**The story-in-pictures of “The Mummy,”
as told in the 1959 motion picture starring
Peter Cushing and Christopher Lee.**



1

Stephen Banning, portrayed by Felix Aylmer, has come to Egypt on an archaeological expedition.

2

About to enter an Egyptian tomb, *Banning* and his associate, *Joseph Whemple*, played by Raymond Huntley, are warned by a menacing Egyptian named *Mehemet*, played by George Pastell, that to do so is extremely dangerous. To trespass is to desecrate the tomb—and the ancients may seek revenge.





3

The Banning Expedition nevertheless proceeds with its work. *Stephen's* son, *John Banning*, portrayed by Peter Cushing, announces that they have found the tomb of *Princess Ananka*.

Stephen Banning and *Joseph Whemple* prepare to enter the tomb of the *Princess Ananka*.



4

5

Banning and *Whemple* find the sarcophagus containing the remains of *Princess Ananka*, and also come upon the sacred *Scroll of Troth*.





6

While *Whemple* explores another chamber of the tomb, *Stephen Banning* reads aloud the sacred scroll, not realizing that he is reciting the words that will bring back to life the mummy of the high priest *Kharis*. As he reads, the mummy, played by *Christopher Lee*, enters *Princess Ananka's* tomb.



7

Stephen Banning suffers a mysterious sort of seizure, and *Mehemet* appears to retrieve the sacred scroll, then leaves.

8

Whemple returns to *Ananka's* tomb and finds his friend unconscious.





9

Following the accident, *Stephen Banning* loses his memory. No one exactly knows what happened inside *Ananka's* tomb—except that the sacred scroll is missing.



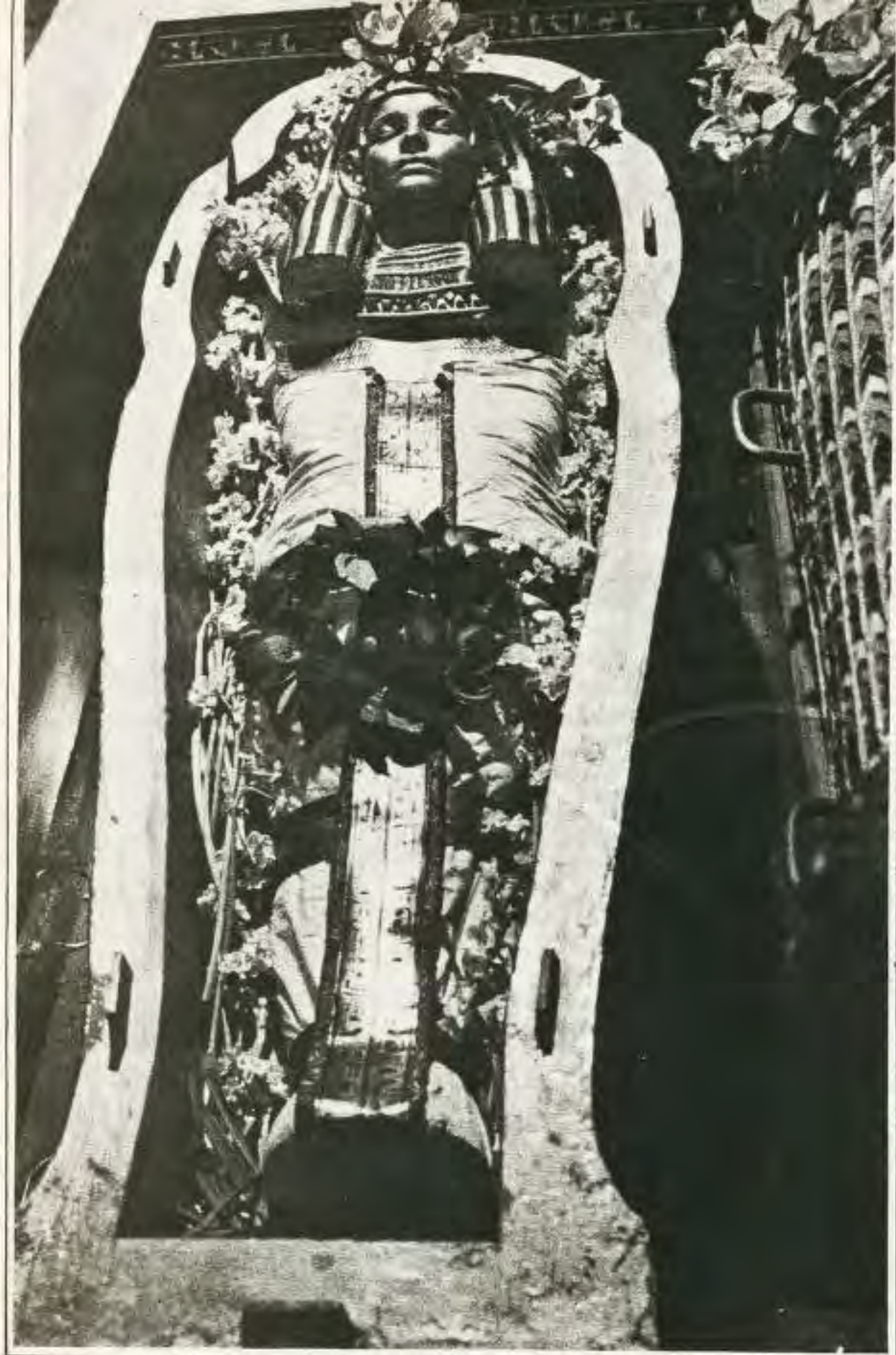
10

Years pass before *Mehemet*, who considers himself a high priest of the ancient religion, is able to begin his revenge for the desecration of the tomb of the *Princess Ananka*. He brings the mummy of *Kharis* to England, where the *Bannings* live. On the way, an accident results in the mummy tumbling into a bog.

11

At *Mehemet's* command, the mummy breaks into the sanatorium where *Stephen Banning* has been, and kills him.





12 Following his father's death, *John Banning* begins to think that perhaps the mummy is responsible. This begins a flashback sequence explaining the story of the *Princess Ananka* and the high priest *Kharis*.

13

Kharis was grief-stricken when the *Princess Ananka* died.





14

As *Ananka's* funeral procession progresses, *Kharis* decides to attempt to bring her back to life by reading over her body the sacred Scroll of Troth. This is in violation of a sacred law.

Kharis is found out and punished. So that he can not say the sacred life-giving words, his tongue is ripped out. Then he is buried alive.

15





Back in England, the mummy attacks *John Banning*, who fights back by shooting him with a shotgun and impaling him on an iron arrow. But nothing can stop the mummy.



With *John Banning* stunned, the mummy turns to *John's* wife, *Isabell Banning*, whom he believes to be the reincarnation of the *Princess Ananka*. Both *Ananka* and *Isabell* were portrayed by *Yvonne Furneaux*.



Mehemet orders the mummy to kill *Isabell*, but instead the mummy turns on *Mehemet* and kills him.

The mummy now picks up *Isabell* and heads with her back to the bog, so that at last *Kharis* and his beloved *Ananka* can be together in death. He has with him the sacred scroll.





John Banning arrives and instructs *Isabell* to have the mummy put her down.

Isabell stands away from the mummy, as men summoned by *John* open fire.



The bullets do nothing, but the mummy, seeing *Isabell* with *John*, seems to understand that he belongs not in this, but in the next world. He sinks beneath the bog.

